

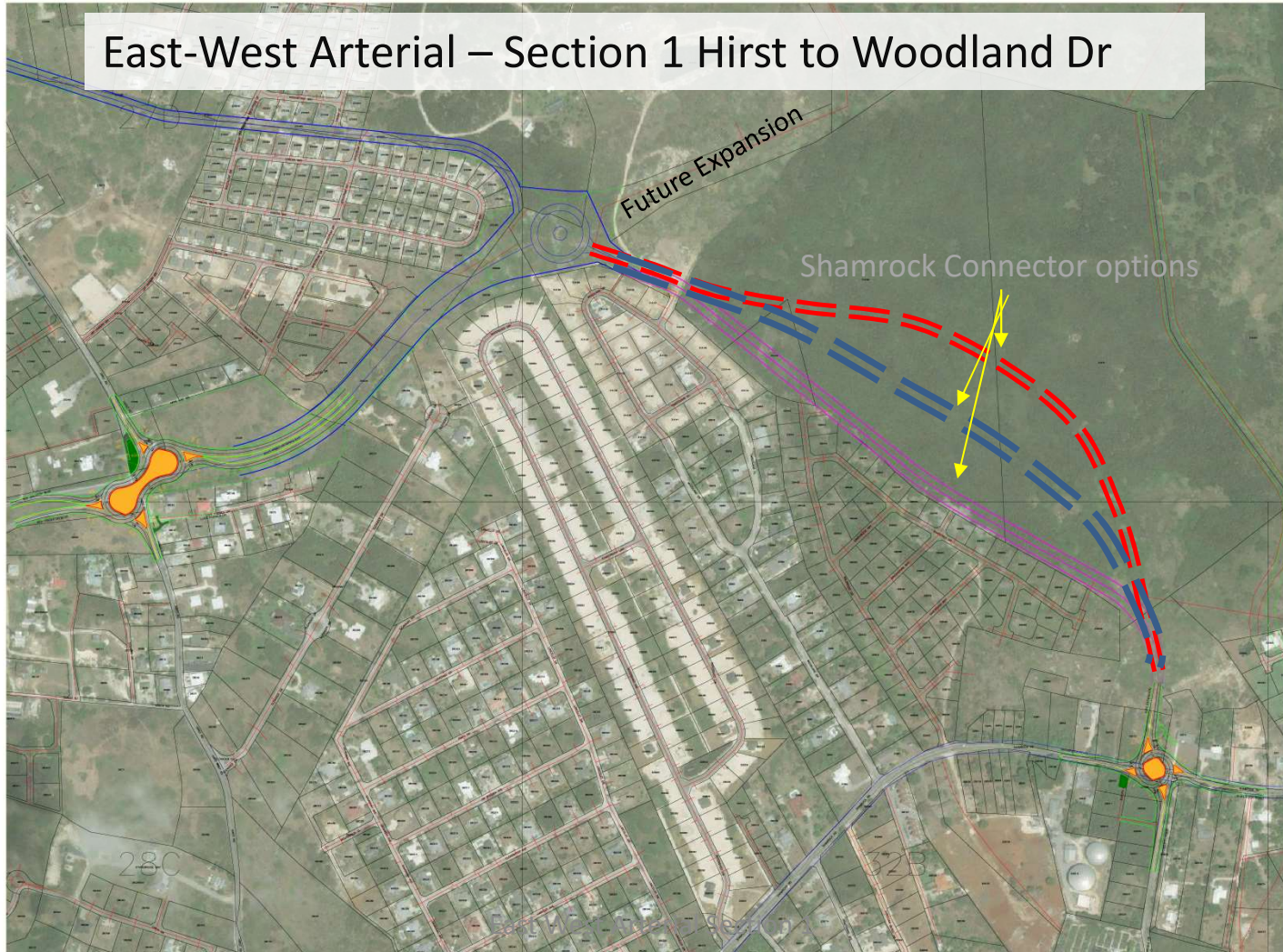
E-W Arterial

Section 1 – Hirst Road to Woodland Dr area

Section 1a – Hirst Road/Rex Crighton Blvd Intersection

Section 1b – Shamrock Road Connector (EW Arterial to Agricola Dr)

East-West Arterial – Section 1 Hirst to Woodland Dr



HIRST ROAD – REX CRIGHTON BLVD INTERSECTION OPTION 1

The aerial map illustrates the proposed roundabout intersection of Hirst Road and East-West Arterial Extension. The roundabout is a three-lane design with a central island. The approach roads are labeled 'HIRST RD' and 'EAST-WEST ARTERIAL EXT'. The map shows surrounding residential and commercial properties with lot numbers such as 270445, 270447, 27027, 27030, 27039, 28C178, 28C100, 28C22, 28C119, 28C67, 28C18, 28C17, 28C16, 28C12, 28C526, 28C6, 28C465, 28C467, 28C59, and 28C526. A design vehicle diagram is shown in the bottom left corner, and a north arrow and scale bar are in the bottom right corner.

DESIGN VEHICLE

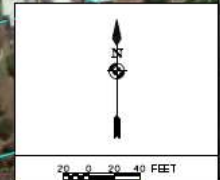
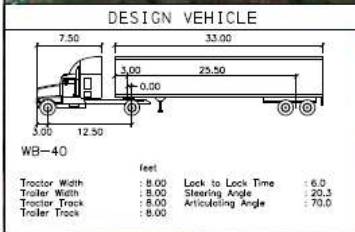
WB-40

Tractor Width : 8.00
Trailer Width : 8.00
Tractor Track : 8.00
Trailer Track : 8.00

Lock to Lock Time : 6.0
Steering Angle : 20.3
Articulating Angle : 70.0

EAST-WEST ARTERIAL EXTENSION-HIRST ROAD ROUNDABOUT

WRA
Whitman, Requardt & Associates, LLP
200 West 10th St, Suite 100, Lincoln, Nebraska 68501



EAST-WEST
ARTERIAL EXTENSION-
HIRST ROAD ROUNDABOUT

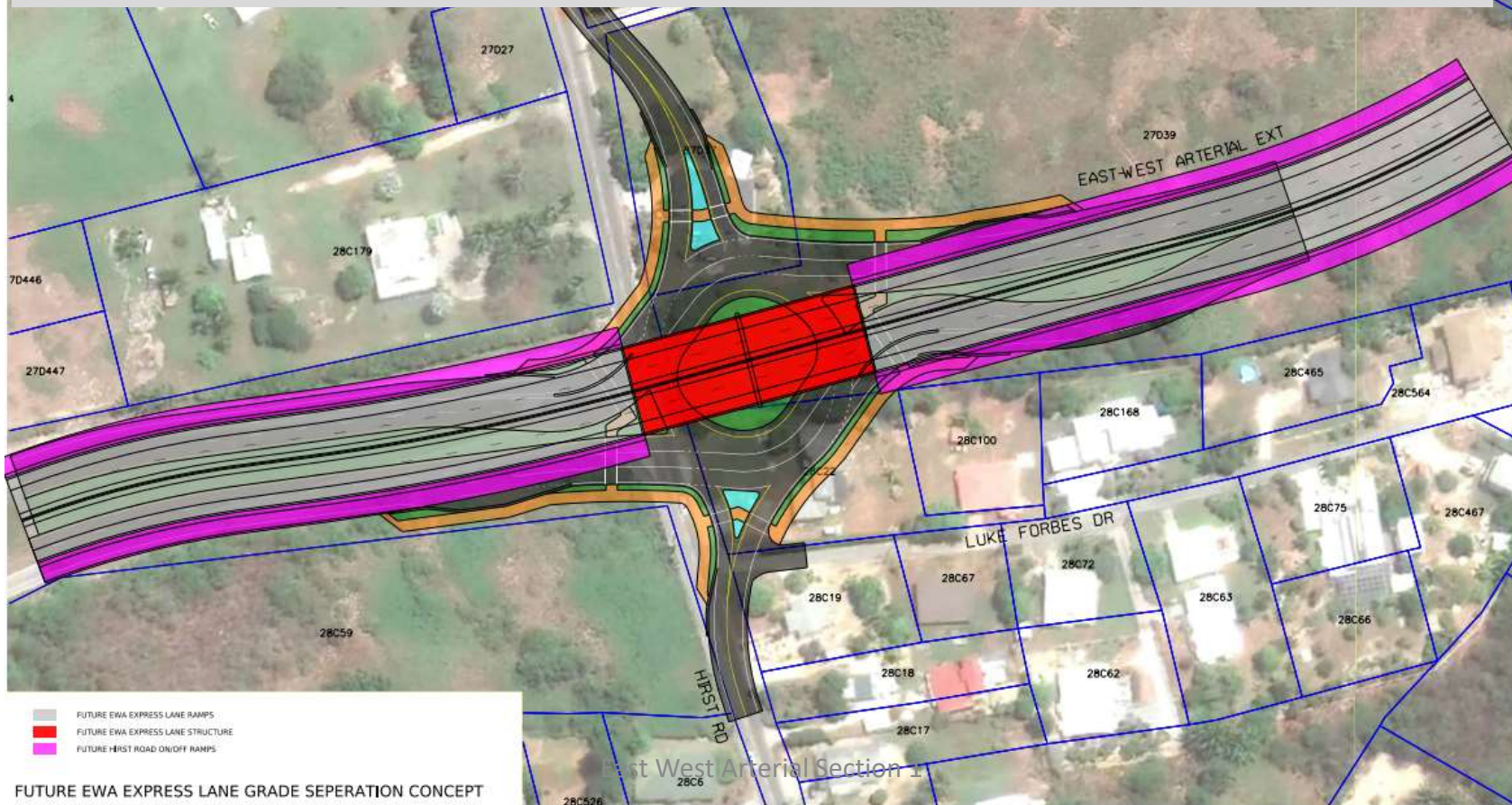


HIRST ROAD – REX CRIGHTON BLVD INTERSECTION OPTION 2

FUTURE 3 LANE ROUNDABOUT

FUTURE 3 LANE ROUNDABOUT

HIRST ROAD – REX CRIGHTON BLVD INTERSECTION OPTION 2 w/ potential future overpass



SHAMROCK RD – AGRICOLA DR INTERSECTION

