



**Contact**

P: (345)946-7780

E: [nra@nra.ky](mailto:nra@nra.ky)

---

**NEW TEMPORARY ROAD LAYOUT STARTS - ELGIN AVENUE TO CREWE ROAD CONNECTOR**

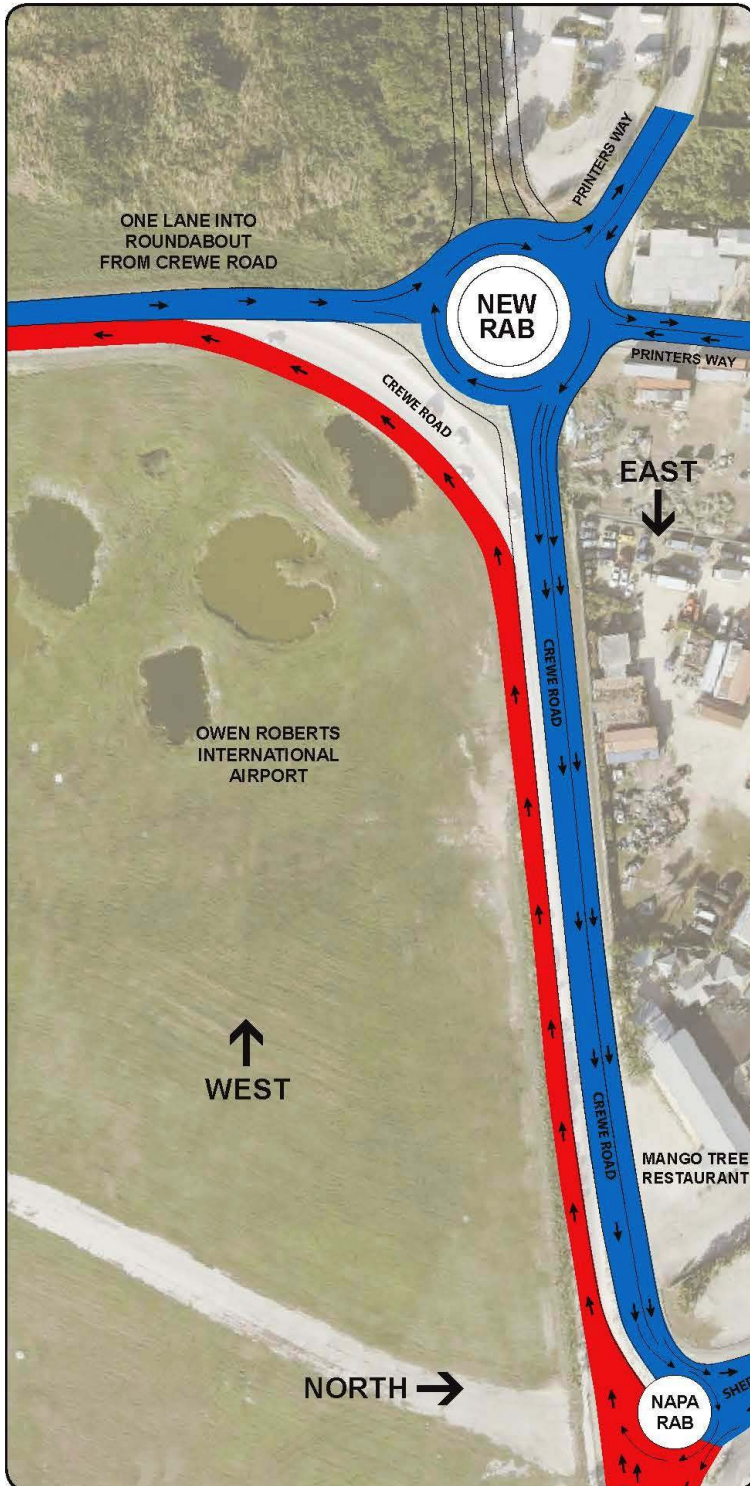
[CLICK HERE](#)- Elgin Avenue Extension & Crewe Rd. Realignment

NEWS DESCRIPTION

---

# TEMPORARY ROAD LAYOUT

## Elgin Avenue to Crewe Road Connector



### New Temporary Road Layout Starts Monday, 18<sup>th</sup> March 2019

The NRA look forward to this phase of the Elgin Avenue to Crewe Road Connector widening project being completed and thank you for your patience.

**We apologize for any inconvenience caused by these works.**

North bound traffic on Crewe road will use the temporary slip lane to enter the new roundabout.

Traffic from Printers Way **MUST** use the new roundabout.

Traffic exiting Dorcy Dr. heading to Crewe Road will use one lane on temporary surface.

**To ensure your safety, please follow all relevant signs and road markings**

-  [www.caymanroads.com](http://www.caymanroads.com)
-  [nra@nra.ky](mailto:nra@nra.ky)
-  345.946.7780
-  [www.facebook.com/nraroads/](https://www.facebook.com/nraroads/)

*The National Roads Authority aims to improve lives by improving transportation.*



